



Multi-interface 4K HDR studio monitors

DT-U Series



12G-SDI

4x 3G-SDI

HDMI 2.0

SFP 4K

4K panel with multiple 4K interfaces

HLG-HDR and PQ-HDR capability

Built-in 3D LUT auto-calibration

Remote control via web browser





DT-U27HB

27" 3840x2160 10-bit, 750nit High Bright



DT-U31

31.5" 3840x2160 10-bit



DT-U31PRO

31.1" 4096x2160 10-bit

KEY FEATURES

Wider Colour Gamut

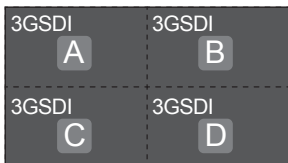
Model	ITU709	DCI-P3	BT2020
DT-U27HB	100%	97.2%	73%
DT-U31	100%	99.2%	75.6%
DT-U31PRO	100%	99.4%	83.8%

Multiple 4K interfaces

DT-U Series monitors support 12G/6G/3G-SDI input, 4x 3G-SDI quad link input (both quad and 2SI), 4K60p HDMI 2.0 input, and by optional plug-in SFP adaptor, the DT-U monitors support additional 4K SFP display and converted to 12GSDI output.

12G-SDI
HDMI 2.0
4K SFP

Single link 4K input



Quad link and 2SI 4K input

HLG and PQ Capability

DT-U Series monitors support HLG HDR, ST.2084 PQ and S-log3 HDR display to present realistic image.

Low latency mode

Supports low latency mode (less than half frame) under 4K input sources; the special image processing mode for lip-sync monitoring.

Webserver IP remote control

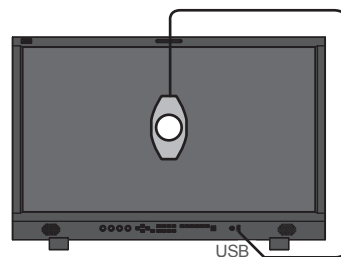
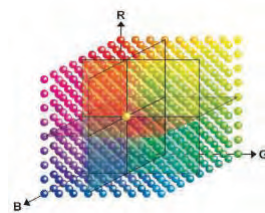
Connect the monitor via LAN and read the monitor status or set menu by computer web browser, which enables studio administrators to control all the monitors remotely.

Other features

- Gamma preset selection: 1.0 ~ 3.0 (step 0.1)
- TSL 3.1, 4.0, 5.0 UMD support
- On-screen TALLY display
- SDI Timecode (LTC, VITC1&2) display
- AFD (Active Format Description) info display
- Frame/Field view selection
- R/G/B/Mono, False colour, Zebra stripes display
- Focus assist display mode
- H/V delay, freeze frame display mode
- Safety area selection: 80%, 85%, 90%, 93%, 95%
- Scale marker: 4:3, 13:9, 14:9, 15:9, 1.85:1, 2.35:1
- Native scan, over scan and normal scan selection
- GPI control via RS485 port connection
- USB firmware upgrade

3DLUT auto colour calibration

DT-U Series monitors support 3DLUT 17x17x17 precise auto calibration, with built-in colour generator and calibration software. Supports X-rite i1 Display (special version) and JETI Specbos 1211 to directly plug into monitor USB port to auto calibrate. The calibration process time is as short as 15 minutes (X-rite) or 45 minutes (Specbos).



Built-in 3DLUT calibration software, Directly connect colour sensor probe to monitor USB port, and the monitor will calibrate itself automatically.

Built-in De-log LUTs

DT-U Series monitors have built-in De-log LUTs including JVC J-log1, ARRI Log-C, SONY S-log2, S-log3, Canon C-log, Panasonic V-log and RedLogFilm LUTs, to convert to ITU-Rec.709 directly.

User 3DLUT upload

DT-U Series monitors support user 3D-LUT cube files to upload via USB, which is convenient for colour creation during post-production monitoring.

Waveform/Vector/Histogram

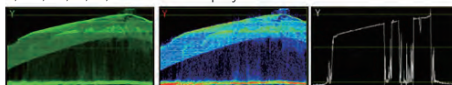
Supports waveform selection display (Y, Cb, Cr, R, G, B), and single lines selection mode; support vector scope and R/G/B/Y histogram display, with multiple display position, size and colour selection.



Y, Cb, Cr, R, G, B selection display



Vector scope with colour selection



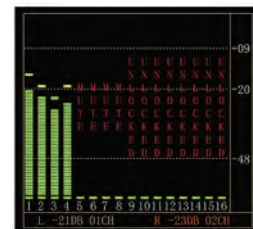
Colour selection and single line mode



R/G/B/Y histogram

16-ch audio meters with alert and output selection

Supports de-embed audio from SDI and HDMI, and displays 16-ch audio level meters, with audio abnormal alerts info displayed on each audio bar. You can also select any 2 channels audio to output via 3.5mm socket or speakers. The audio meter pattern position can be selected from one of four corners, and you can select to display only 2 channels, 8 channels or the full 16 channels. Also scale markers, alert info and translucence of the audio meter graphics are selectable.



Front Controls



Rear Terminals

SFP IN 4K
Optional Plug-in adaptor

12G-SDI OUT

4K quad link
 { 12G-SDI IN
 3G-SDI IN
 3G-SDI IN
 3G-SDI IN

HDMI 2.0 IN

HDMI 2.0 OUT

ETHERNET

GPI IN

RS485 IN

RS485 OUT

AUDIO R IN

AUDIO L IN



DT-U31 pictured, and DT-U27HB, DT-U31PRO have the same front control and rear interfaces.

Compatible video formats

SDI

4096×2160p (60 / 59.94 / 50 / 30 / 29.97 / 25 / 24 / 23.98)

3840×2160p (60 / 59.94 / 50 / 30 / 29.97 / 25 / 24 / 23.98)

2048×1080p (60 / 59.94 / 50 / 30 / 29.97 / 25 / 24 / 23.98)

2048×1080i (50 / 59.94 / 60)

1080p (60 / 59.94 / 50)

1080i (60 / 59.94 / 50); 1080p (30 / 29.97 / 25 / 24 / 23.98)

1080psf (30 / 29.97 / 25 / 24 / 23.98)

720p (60 / 59.94 / 50)

480i (59.94), 576i (50)

HDMI

4096×2160p (60 / 59.94 / 50 / 30 / 29.97 / 25 / 24 / 23.98)

3840×2160p (60 / 59.94 / 50 / 30 / 29.97 / 25 / 24 / 23.98)

1080p (60 / 59.94 / 50 / 30 / 29.97 / 25 / 24 / 23.98)

1080i (60 / 59.94 / 50)

720p (60 / 59.94 / 50)

Specifications

MODEL	DT-U27HB	DT-U31	DT-U31PRO
LCD Display			
Size	27 inches	31.5 inches	31.1 inches
Display area	596.7mm×335.7mm	698.4mm×392.9mm	698mm×368mm
Resolution	3840×2160	3840×2160	4096×2160
Colour depth	10-bit 1.073G	10-bit 1.073G	10-bit 1.073G
Brightness	750cd/m2	300cd/m2	350cd/m2
Contrast	1400:1	3000:1	1500:1
Viewing Angle	178°(H) / 178°(V)	178°(H) / 178°(V)	178°(H) / 178°(V)
Surface treatment	Non-glass	Non-glass	Non-glass
Backlighting	LED	LED	LED
Input Signal			
SDI input	12G/6G/3G/HD/SD-SDI ×1 3G/HD/SD-SDI ×3	12G/6G/3G/HD/SD-SDI ×1 3G/HD/SD-SDI ×3	12G/6G/3G/HD/SD-SDI ×1 3G/HD/SD-SDI ×3
HDMI input	HDMI 2.0 ×1	HDMI 2.0 ×1	HDMI 2.0 ×1
SFP/IP input	SFP×1 (Optional plug-in adaptor)	SFP×1 (Optional plug-in adaptor)	SFP×1 (Optional plug-in adaptor)
Audio input	RCA L×1; R×1	RCA L×1; R×1	RCA L×1; R×1
UMD input	RS485 ×1	RS485 ×1	RS485 ×1
GPI input	RS485 ×1	RS485 ×1	RS485 ×1
Ethernet input	RJ45 ×1	RJ45 ×1	RJ45 ×1
USB input	USB-A ×1	USB-A ×1	USB-A ×1
Output Signal			
SDI output	12G/6G/3G/HD/SD-SDI ×1	12G/6G/3G/HD/SD-SDI ×1	12G/6G/3G/HD/SD-SDI ×1
HDMI output	HDMI 2.0 ×1	HDMI 2.0 ×1	HDMI 2.0 ×1
Audio output	3.5mm ×1; Speaker ×2	3.5mm ×1; Speaker ×2	3.5mm ×1; Speaker ×2
UMD output	RS485 ×1	RS485 ×1	RS485 ×1
General			
AC Input	AC 100-240V 50/60Hz	AC 100-240V 50/60Hz	AC 100-240V 50/60Hz
DC Input	DC 12V-17V	DC 12V-17V	DC 12V-17V
Power consumption	Max 90W	Max 75W	Max 110W
Working temperature	0°C - +40°C	0°C - +40°C	0°C - +40°C
Working humidity	10% - 90%	10% - 90%	10% - 90%
Storage temperature	- 15°C - + 60°C	- 15°C - + 60°C	- 15°C - + 60°C
Storage humidity	10% - 90%	10% - 90%	10% - 90%
Dimensions	653×434×91mm	748×485×91mm	748×467×91mm
Net weight	10.35 Kg	11.95 Kg	11.45 Kg

www.jvcpro.eu

E. & O.E. Design and specifications subject to change without notice
Copyright 2018, JVCKENWOOD Corporation. All Rights Reserved.

